



USB-Link 2 Technical Guide

ASM02244

Software SS0073, version 4.11 and up
Software SS3007, version 1.00 and up



TABLE OF CONTENTS

General Information	3
USB-Link 2 Overview	3
System Requirements	3
Quick Guide	4
Important Notes	4
Quick Guide	4
Finding the Software Number	4
USB Driver Installation	5
USB Serial Converter and Serial Port Driver Installation.....	5
Connection and Wiring	6
Finding the COM Port Number	7
Finding What COM Port Number the USB-Link 2 is Using (Windows 10).....	7
Prism 2 Setup Instructions	8
Configuring Prism 2 for the USB-Link 2.....	8
Communication Settings and LED Descriptions	10
USB-Link 2 Switch Settings.....	10
USB-Link 2 LED Descriptions.....	10
Troubleshooting	11
Troubleshooting Tips	11
Troubleshooting the COM Port Number	12
Changing the USB COM Port Number	12



www.aaon.com

All manuals are also available for download from
www.aaon.com

AAON
2425 South Yukon Ave. Tulsa, OK 74107-2728
www.aaon.com
AAON® is a registered trademark of AAON, Inc., Tulsa, OK.
Microsoft®, Windows®, and Windows 10® are either registered
trademarks or trademarks of Microsoft Corporation in the United
States and/or other countries.
AAON P/N: G019140, Rev. K
Copyright September 2023 AAON, Inc.

AAON assumes no responsibility for errors or omissions in this
document. This document is subject to change without notice.
It is the intent of AAON to provide accurate and current product
information. However, in the interest of product improvement,
AAON reserves the right to change pricing, specifications, and/
or design of its product without notice, obligation, or liability.

USB-Link 2 Overview

The ASM02244 USB-Link 2 is a portable device that is used as an interface to connect your computer to AAON controllers without the need for a CommLink.

The USB-Link 2 provides a direct link to enable you to view the status and configure and adjust the setpoints of any controller on the control system communications loop using Prism 2 software.

The USB-Link 2 is small in size and is powered by the USB port of the computer it is plugged into, making it completely portable and allowing connection to the system from any controller.

The USB-Link 2 is supplied with a USB cable, a mini-DIN male communication cable, and two mini-DIN to terminal adapters. The communication cable allows you to walk up to any controller that has a communication socket and plug in the USB-Link 2 to gain access to the system. The adapters are used for boards that do not have a female mini-DIN plug connection.

System Requirements

To enable the USB-Link 2 to work with Prism 2, you will need:

- USB-Link 2 with USB cable, mini-DIN male communication cable, and adapters for terminal and modular connections (cables and adapters provided).
- **A USB-Link 2 with the SS0073 software requires drivers be installed before connecting to your computer.** The drivers are supplied on a flash drive with the USB-Link 2 but can also be downloadable from www.aaon.com.
- **A USB-Link 2 with SS3007 software does not require a separate driver installation.** These use the drivers included with Windows 10.
- PC with USB 1.1 or 2.0 port (supplied by others).
- Microsoft Windows 10 (installed on the PC you are going to use).
- Prism 2 software version 4.0.4 or later (supplied with USB-Link 2 but also downloadable from www.aaon.com/prism).

Networked Systems Only

- CommLink(s) and/or MiniLink(s).

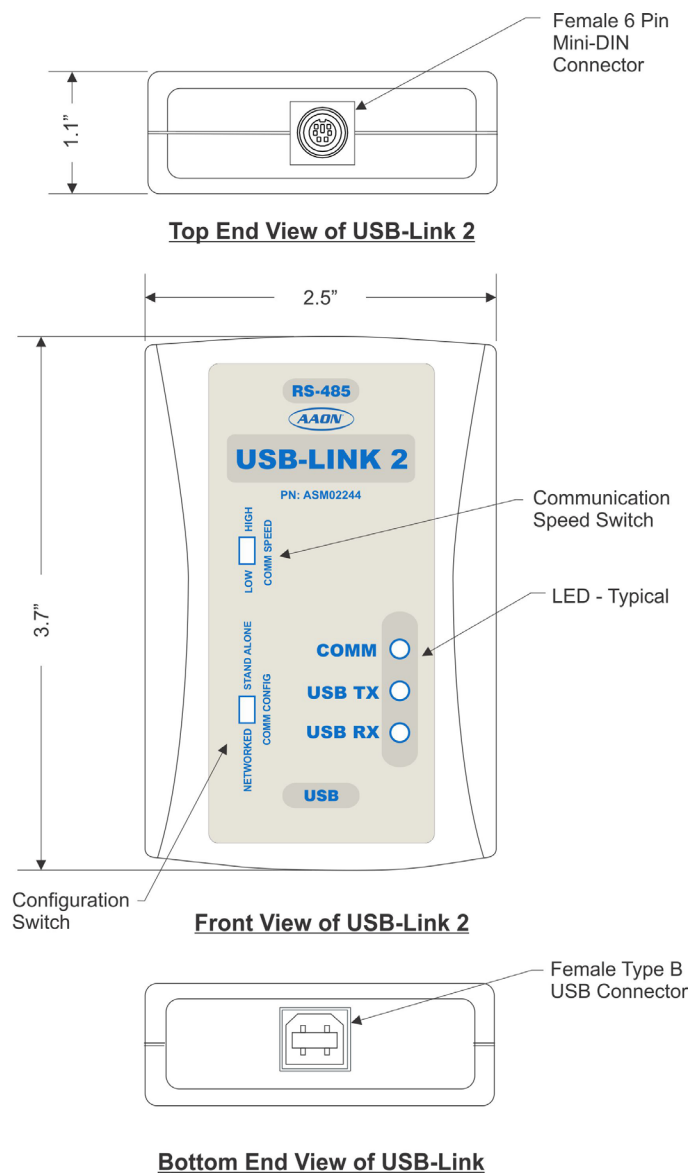


Figure 1: Top, Front, and Bottom Views of the USB-Link 2

Quick Guide

Quick Guide

Follow the six steps below to get your USB-Link 2 up and running in no time.

WARNING: A USB-Link 2 with the SS0073 software requires drivers be installed before connecting to your computer. The drivers are supplied on a flash drive with the USB-Link 2 but can also be downloaded from www.aaon.com. **A USB-Link 2 with SS3007 software does not require a separate driver installation.** These use the drivers included with Windows 10.

- Step 1:** Set your USB-Link 2's configuration switch to Stand Alone or Network (**Figure 3, page 10**).
- Step 2:** Set your USB-Link 2's communication speed switch to Low Speed or High Speed (**Figure 3, page 10**).
- Step 3:** If required, install the USB drivers from the included CD-ROM onto your computer.
- Step 4:** Attach the USB cable to your USB-Link 2 and plug the other end of the cable into your computer's USB port (**Figure 2, page 6**).
- Step 5:** Attach the communication cable to your USB-Link 2 and connect the other end of the cable to the Controller's communication port (**Figure 2, page 6**).
- Step 6:** Install the included Prism 2 software on your computer (**page 8**).

Finding the Software Number

To find the software number installed on your USB-Link 2, find the software sticker on the back of the unit. Units with SS0073 DO need drivers installed; units with SS3007 (pictured below) do NOT need drivers installed.



Important Notes

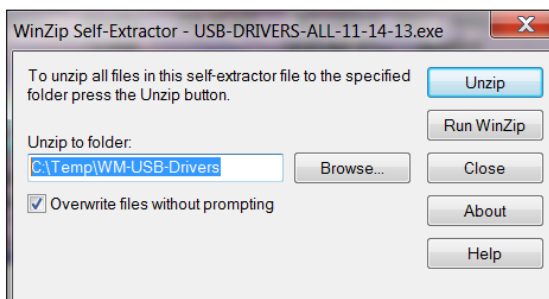
- Follow the included USB-Link 2 driver installation instructions (**page 5**).
- Follow the connection and wiring instructions (**Figure 2, page 6**) to connect and configure the USB-Link 2.
- Familiarize yourself with all system components and review all documentation. Pay special attention to “Cautions,” “Notes,” and “Warnings” since these may keep you from experiencing unnecessary problems.
- If you encounter any problems, please refer to the Troubleshooting section of this guide first. If you can't resolve the problem, please call AAON Controls Support at our toll free number—1-866-918-1100.

USB Serial Converter and Serial Port Driver Installation

The internal USB communication port of the USB-Link 2 uses a specialized driver that must be installed on your Windows PC before communication to the device can be established.

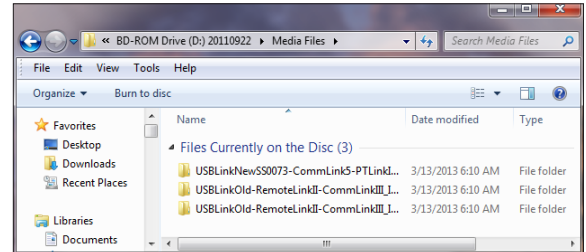
NOTE: If you are using a USB-Link 2 with SS0073 software and a CommLink 5, you may already have this driver installed on your PC. If you are using a USB-Link 2 with SS3007 software, the drivers are already installed as part of Windows 10.

1. Before you begin, you must determine if your computer is running 32-bit or 64-bit Windows. Open the System information by *right-clicking* the **<Windows>** icon and then *selecting* **<System>**. Under System, you can view the system type. Based on what type of system you have, you will choose 32_Bit.exe or 64_Bit.exe from the list of files shown in **Step 10**.
2. If necessary, *insert* the USB Drivers flash driver into your USB port or *download* the USB Drivers file from www.aeon.com. If using the flash driver, go to **Step 7**. If downloading the file, you will need to scroll down the page until you find “USB Drivers” to download the driver files.
3. *Right click* on “**Click Here.**” Then click **<Save Link As>** or **<Save Target As>** and *select* Desktop as the destination.
4. *Go to* the “USB-DRIVERS-ALL.exe” file on your desktop. *Double-click* on this file and choose “Run” from the options list. The following window will appear:



5. *Select* **<Unzip>** and the file will be unzipped to the folder C:\Temp\WM-USB-Drivers folder by default.
6. Next, *go to* the C:\Temp\WM-USB-Drivers folder and now *go to* **Step 9**.
7. *Open* the **<File Manager>** icon and find the flash drive in the left column.

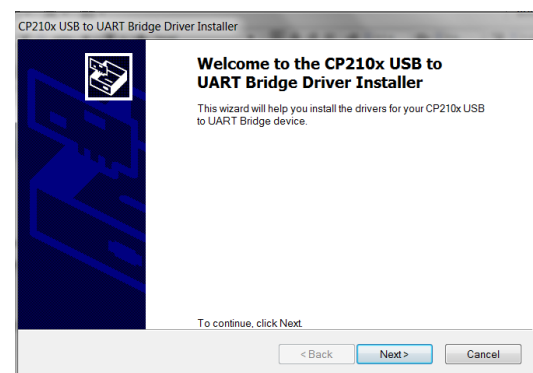
8. *Double-click* on your flash drive. Open the Media Files Folder.
9. *Double-click* the folder “USBLink NewSS0073”.



10. The following list of files will display. Choose 32_Bit.exe or 64_Bit.exe based on what type of system you determined you have in **Step 1**.

Name	Date modified
x64	11/19/2013
x86	11/19/2013
CP210xVCPInstaller_32_Bit.exe	10/24/2013
CP210xVCPInstaller_64_Bit.exe	10/24/2013
dpinst.xml	10/24/2013
ReleaseNotes.txt	10/24/2013
SLAB_License_Agreement_VCP_Windows...	10/24/2013
slabvcpcat	10/24/2013
slabvcpcinf	10/24/2013
WM-USB-NewProducts-01B.pdf	11/14/2013

11. In the window that pops up, shown below, *click* **<Next>** and the installation program will walk you through the rest of the steps.



12. When successful installation has occurred, connect the USB cable between the PC and the USB-Link 2. The PC will automatically recognize the device and a COM port will be assigned. Follow the procedures on **page 7** to verify the Comm Port.

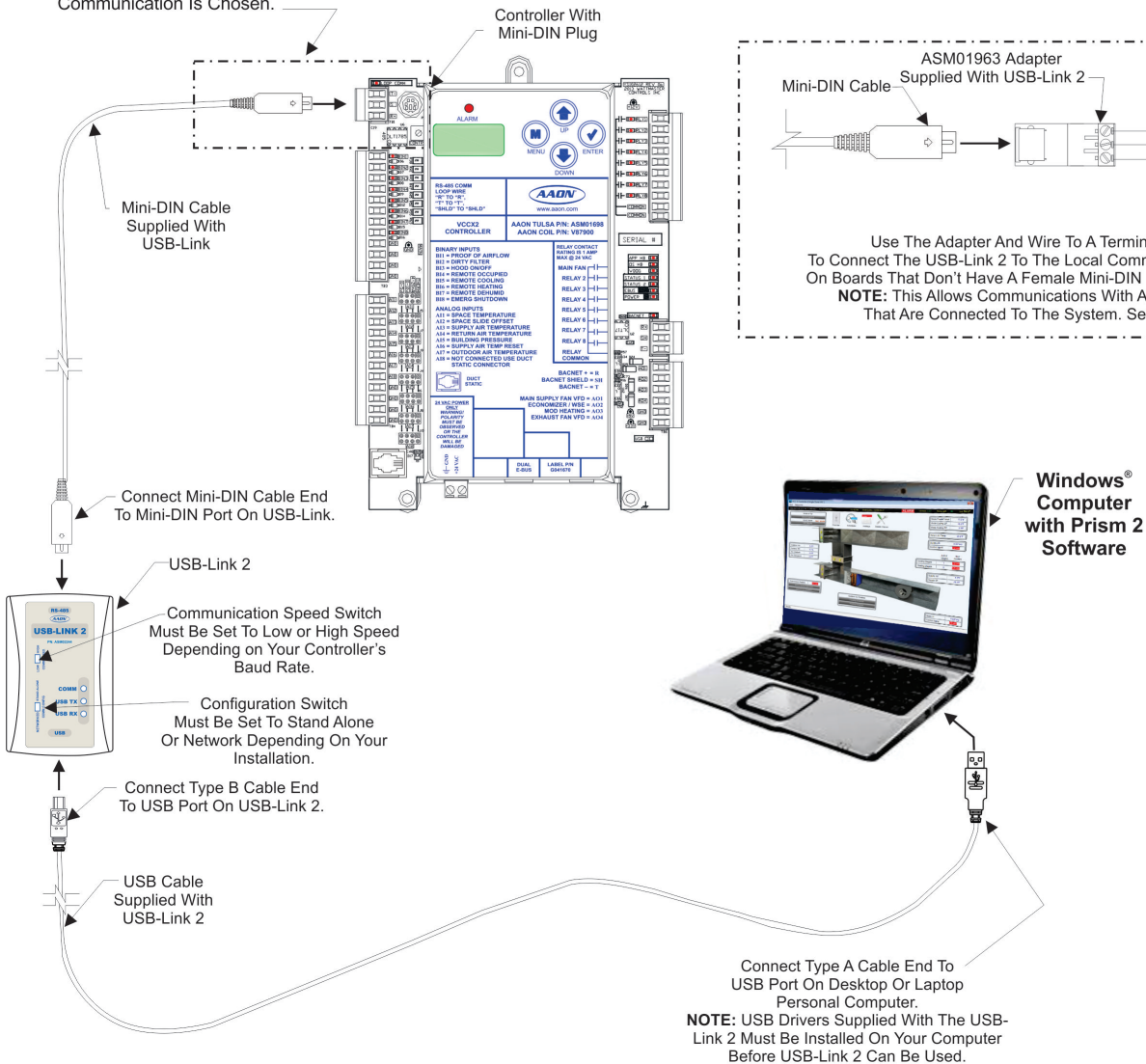
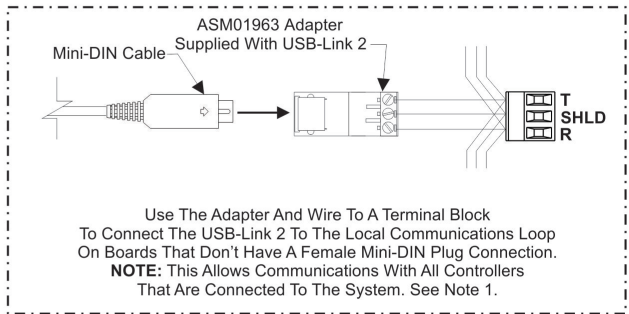
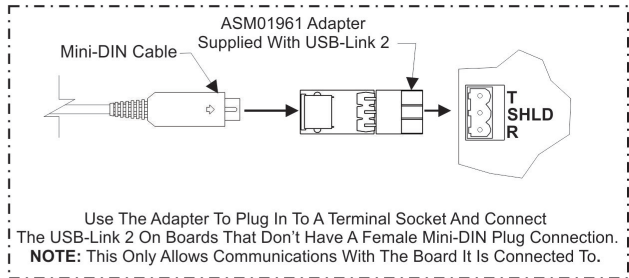
CONNECTION & WIRING

Connection and Wiring

Notes:

1. In Order To View A Single Controller Using Prism 2, You Must Disconnect The Communication Loop From The Controller Your USB-Link Is Plugged Into, Set The USB-Link Configuration Switch To Stand Alone, Set The Type Of CommLink In Prism 2 To USB Link Stand Alone, And Cycle Power By Disconnecting And Reconnecting the USB Power Supply Cable.

Connect The USB-Link 2 Mini-DIN Cable To The Female Mini-DIN Plug Connector On Controllers That Are Supplied With Them. **NOTE:** This Allows Communications With All Controllers That Are Connected To The System When Network Communication Is Chosen.

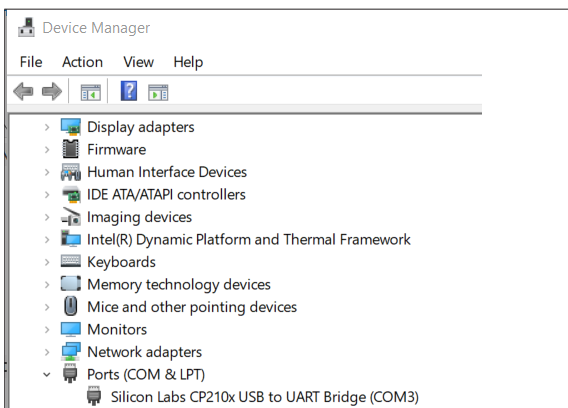


Finding What COM Port Number the USB-Link 2 is Using

1. *Right-click* on the Windows icon, located on the bottom left or top left of the Windows Tool Bar.



2. *Select* <Device Manager>.
3. *Click* on the plus sign next to Ports to see all of the common ports.





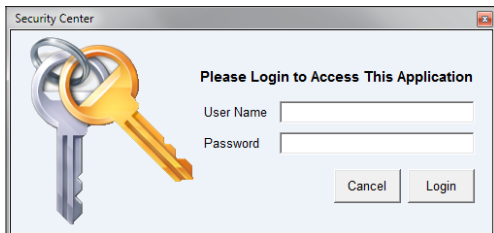
4. *Locate* the USB Serial Port (COM#). The COM# in parentheses is the port it is located on. *Write* this COM port number down. You will need to know this when setting up the Prism 2 software.

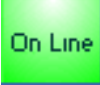

NOTE: The COM port must be less than 10 for Prism 2 to see it. If it is greater than 10, see “Changing the USB COM Port Number” on page 12.

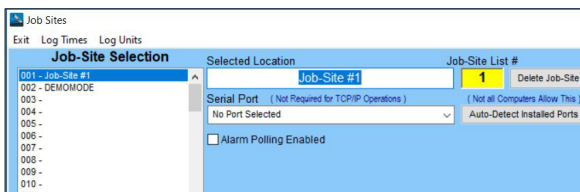
Prism 2 Setup Instructions

Configuring Prism 2 for the USB-Link 2

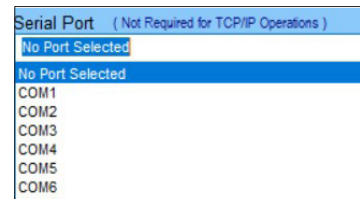
1. Insert your Prism 2 software CD and follow the steps in the readme.txt file to install the software.
2.  The instructions will tell you to create a Prism 2.exe shortcut on your desktop. Click on this icon to open your Prism 2 software.
3.  Click the <Login> button and type in the level 3 User Name and password (default is “admin, admin”). Click <Login>.



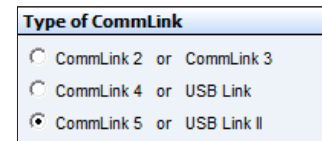
4.  If Prism 2 is online, click the <ON LINE> button to make it go <OFFLINE>.
5.  Click the <Job-Site> button to open the Job Sites Window.
6. Click on any empty location in the Job-Site Selection Window and type in a job name in the Selected Location field and press <Enter>.



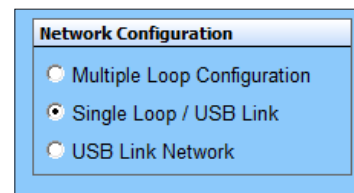
7. In the Serial Port field, click on the pull down box and select the COM port number that the USB-Link 2 is using.



8. In the Type of CommLink selection box, select the radio button next to “CommLink 5 or USB Link II”.



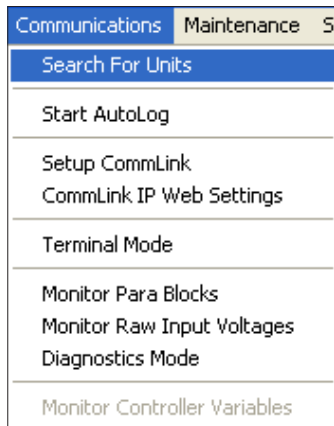
9. In the Network Configuration selection box, select the mode for the USB-Link 2 you are using. If using stand alone mode, select USB Link Stand Alone. If using network mode, select USB Link Network. The position of the slide switch on the USB-Link 2 must also be set to the mode you are using (See Figure 3, page 10 for help in setting this switch).



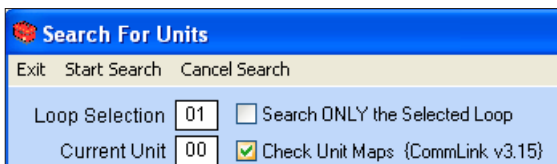
10. Click <Exit> to close out of the Job Sites Window.

11.  Click the <OFFLINE> button to go <ON LINE>.

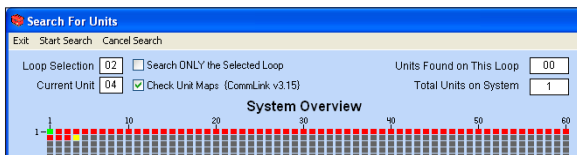
- From the **<Communications>** menu on the main toolbar, select **<Search for Units>**.



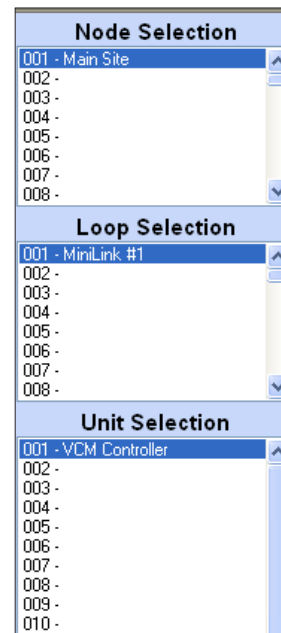
- The *Search For Units Window* will appear. If you haven't performed a previous search, the **Loop Selection** field will read 01 and the **Current Unit** will read 00. You can perform a selective search by entering the loop number you would like to search and checking **Search ONLY the Selected Loop**. The **Check Unit Maps** box will already be checked. Do not deselect this box. Deselecting it will cause the search not to work.



- Click **<Start Search>** to initiate an automatic detection of all installed controllers on your system.
- If everything is working correctly, **Units Found on this Loop** should increase. You will also see green boxes indicating units that have been found.



- If **Units Found on this Loop** stays at zero, check the wiring to the USB-Link 2 and the controller and/or read through these directions again to make sure all steps were followed. Refer to the Troubleshooting Section in the back of this guide for further help.
- To stop a search, click **<Cancel Search>**.
- Once you are done searching for units, close out of the window or click **<Exit>**.
- A window will pop up that asks, "Do you want to save the search results?" Click **<Yes>** if you wish to save the results. Click **<No>** if not.
- You can now access any installed unit from the *Main Prism 2 Screen* by selecting a loop from the *Loop Selection Window* with a *single-click* and by selecting the unit from the *Unit Selection Window* with a *double-click*.



Communication Settings and LED Descriptions

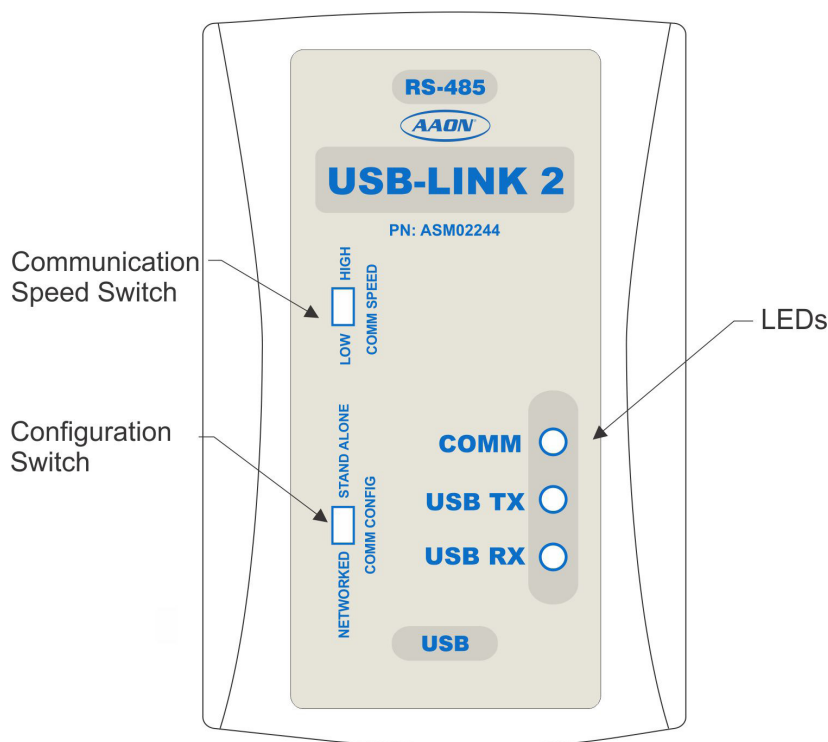


Figure 3: USB-Link 2 Configuration Switch, Communication Speed Switch, and LEDs

NOTE: Whenever you change the configuration or communication speed setting on the USB-Link 2, you must cycle the power to the USB-Link 2 by disconnecting and reconnecting the USB power supply cable.

USB-Link 2 Switch Settings

Configuration Switch

The configuration switch for stand alone or network mode is found to the left of the LEDs. See **Figure 3** above. To set the configuration switch, insert a pen tip to move the switch up or down.

Stand Alone - No MiniLink or CommLink - The slide switch on the USB-Link 2 should be set to “Stand Alone” when you are trying to talk to a stand alone controller or multiple controllers on a loop without a CommLink or a MiniLink wired to the communications loop.

Network - MiniLink or CommLink connection - The slide switch on the USB-Link 2 should be set to “Network” any time there is a CommLink or MiniLink wired to the communications loop.

Communication Speed

The communication speed switch for low or high speed is found to the left of the LEDs. See **Figure 3** above. To set the communication speed switch, insert a pen tip to move the switch up or down.

Low Speed - The switch should be set to LOW if using VCM-X or older generation Orion Controllers, older generation Auto-Zone Controllers, or VCB-X or GPC-XP Controllers that are set to Low Speed.

High Speed - The switch should be set to HIGH if using Pioneer Gold Controllers, VCCX2 Controllers, AZ2 Controllers, or VCB-X or GPC-XP Controllers that are set to High Speed.

USB-Link 2 LED Descriptions

COMM - Indicates communication activity between the USB-Link 2 and the controller(s) that the USB-Link 2 is connected to. When this LED is flashing, data is being exchanged.

USB TX & USB RX - Indicates communication activity between the USB-Link 2 and the computer that the USB-Link 2 is connected to. The LEDs will flash only when data is sent from Prism 2 to the USB-Link 2 via USB.

Troubleshooting Tips

Problems with Prism 2 Software

- Verify that the correct COM port, created by the USB connection, is selected in the *Job-Sites Window*. Verify the COM port number by *right-clicking* on the Windows icon, *selecting* **<Device Manager>**, and *viewing* **<Ports>**.
- Verify that the radio button **<CommLink 5 or USB-Link II>** is selected for the Type of CommLink in the *Job-Sites Window*.
- Verify that the correct USB-Link 2 mode is selected under Network Configuration in the *Job-Sites Window*.

Problems with USB Connection

- Verify that the USB-Link 2's USB LEDs blink when you perform a Search for Units or try to open a status screen in Prism 2.
- If the USB-Link 2's USB LEDs fail to blink, disconnect and reconnect the USB connection.
- If the problem persists, check that the USB drivers have been installed properly

Problems with RS-485 Wiring

- Make sure T connects to T, R to R, and Shld to Shld if multiple boards are wired together on a loop.
- Make sure that the USB-Link 2 mini-DIN communication cable is plugged into a controller or wired to the local side of the loop.

Problems Viewing Controllers on a Network

- Make sure that in Prism 2, **<USB Link Network>** is selected under Network Configuration in the *Job-Sites Window*.

Support Information

Support is available Monday through Friday
7:00 A.M. to 5:00 P.M., Central Time.
1-866-918-1100 | 1-918-382-6450
controls.support@aaon.com

NOTE: AAON Technical Support cannot troubleshoot internal PC and/or Windows-based operating system problems.

NOTE: AAON Technical Support cannot troubleshoot firewalls, routers, and/or problems on a customer's internal or external network. An IT professional may need to be consulted.

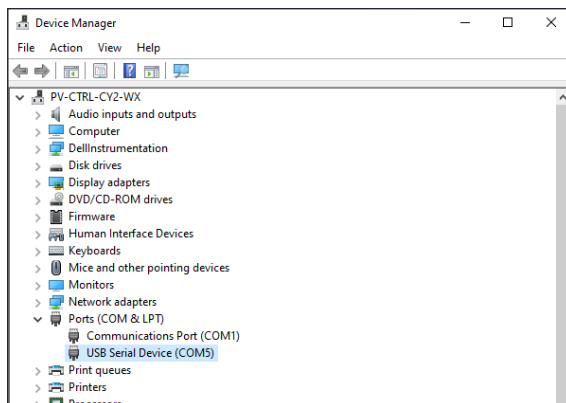
WARNING: Older operating systems, while they still might be capable of running Prism, are not recommended due to security updates being obsoleted by Microsoft. We also do not support troubleshooting of any version of Windows operating the Prism program. Some new models of laptops running the latest release of Windows 10 have also experienced issues running Prism, and we cannot troubleshoot customer computer issues.

Troubleshooting the COM Port Number

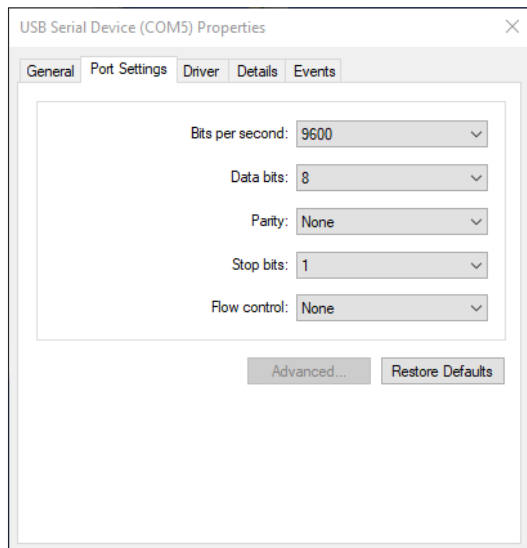
Changing the USB COM Port Number

When the USB-LINK2 is first plugged in, it will be assigned a COM port number to be used for communicating with the Prism 2 software. If the port number is 10 or greater, it needs to be changed to a value less than 10 to be recognized by Prism 2. If you have received a replacement USB-LINK2, change the COM port to match your previous device. Prism 2 will automatically use the new device.

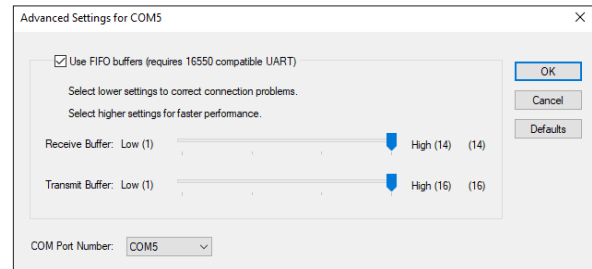
1. *Right-click* on the Windows[®] icon and *select* **<Device Manager>** to get to the *Device Manager Window*.
2. *Click* on the drop down arrow next to Ports to see all of the COM ports.



3. *Right-click* on “USB Serial Port (COM#)” and *select* **<Properties>**. In the *Properties Window*, *select* the **<Port Settings>** tab.



4. To assign a port number less than 10, *click* on **<Advanced>**. The *Advanced Settings Window* will appear.



5. In the COM Port Number drop box, *select* which COM port you wish to use. Make sure you select a COM port number that is not currently in use (you can see the ports in use in the *Device Manager Window*). *Select* a port number that is less than 10.

NOTE: Windows[®] will assign a port number to every device that has ever been installed on your computer. So if there are no available ports below 10, choose a port number less than 10 for a device listed that you know you are not currently using.

6. Once you select the correct COM port number, *click* **<OK>** and close any windows opened in the process of changing the port number. Make note of this number because you will need it for your Prism 2 setup.

AAON Controls Tech Support:

866-918-1100 | 918-382-6450 | controls.support@aaon.com
Monday through Friday, 7:00 AM to 5:00 PM Central Time

Controls Tech Support website:

www.aaon.com/aaon-controls-technical-support

AAON Factory Technical Support:

918-382-6450 | techsupport@aaon.com

NOTE: Before calling Technical Support, please have the model and serial number of the unit available.

PARTS: For replacement parts, please contact your local AAON Representative.



8500 NW River Park Drive • Parkville, MO • 64152
Ph: (816) 505-1100 • Fax: (816) 505-1101
AAON® P/N: G019140, Rev. K
Printed in the USA • © September 2023 AAON
All Rights Reserved