

Updating the Modular Service Tool SD with Prism 2 Version 4.5.0 and higher

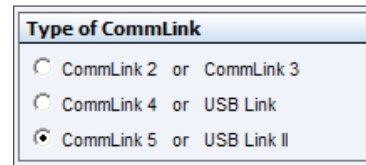
The Modular Service Tool SD is equipped with the ability to update its software with the use of a computer. You will need the following before you begin:

- Modular Service Tool SD in need of an update (powered up)
- CommLink 5 or USB-Link 2
- Computer running Microsoft Windows™ operating system
- Prism 2 software from www.orioncontrols.com or wattmaster.com/techsupport
- Latest version of the Modular Service Tool SD software (e-mailed from our tech support staff or downloaded from <http://techsupport.wattmaster.com>) and software sheet
- USB_Silicon_Labs_Setup.zip driver from <http://techsupport.wattmaster.com> or from CD-ROM
- Modular Service Tool DIN communication cable, USB cable, and adapter

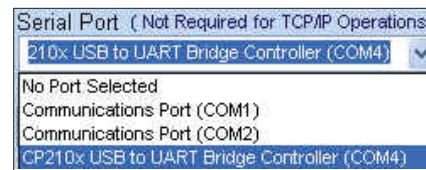
Follow these simple steps to update the Modular Service Tool SD:

1. Turn on your computer and download the latest Prism 2 software from www.orioncontrols.com.
2. Either download and unzip the Service Tool SD hex file software from <http://techsupport.wattmaster.com>, or if you received an e-mail from Tech Support with the file, unzip and save the file to your computer. Record the path and name of the file for later use. Also, print the software sheet provided for future reference.
3. Download the USB_Silicon_Labs_Setup driver from <http://techsupport.wattmaster.com> or the CD-ROM so that Prism can communicate to the Service Tool. See **page 3** for instructions.
4. Plug the DIN communication cable into the Service Tool's communication port and then into the CommLink 5 or USB-Link 2 and then connect the USB-Link 2 or CommLink 5 to the computer's USB port. Make sure the USB-Link 2 and Service Tool SD are set to High Speed and Stand-Alone. To connect the Service Tool to the CommLink 5, you will need to use the adapter that was supplied with your Service Tool. See **Figures 1 & 2, pages 6-7**.

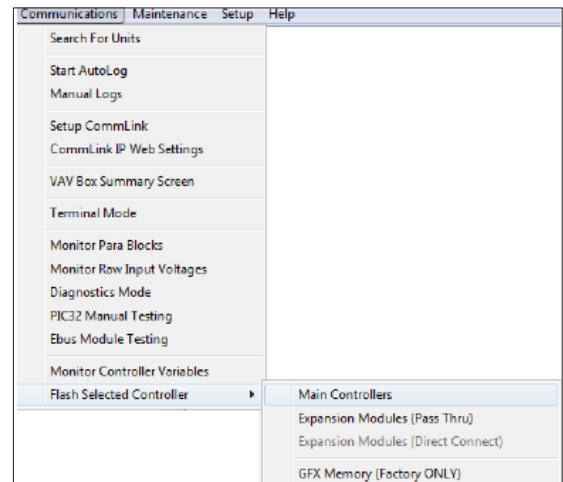
5. Open Prism 2 and Login with the User Name "admin" and password "admin." If successful, "Administrator Access" will appear at the lower right of the Prism program.
6. Click on the <Job-Site> icon. The *Job-Sites Window* will appear. In the *Type of CommLink Dialog Box*, select "CommLink 5 or USB Link II."



7. In the *Job-Sites Window*, from the Serial Port drop down list, select the USB to UART Bridge Controller COM port. If you don't know the COM port number or if the number is 10 or higher, follow the directions on **pages 4 & 5**.



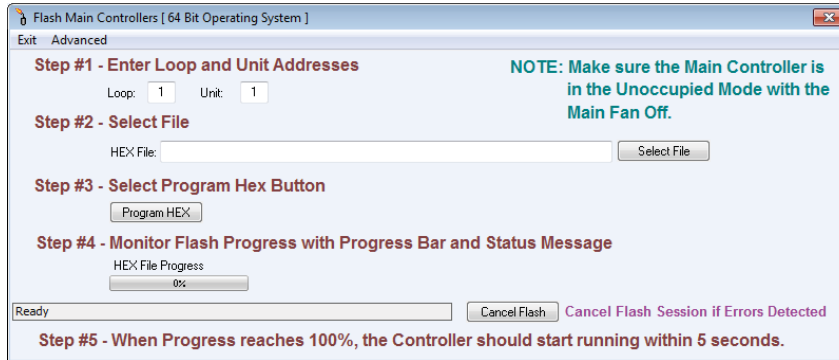
8. From Prism 2's Communications tab, select "Flash Selected Controller." And from the list select "Main Controllers."



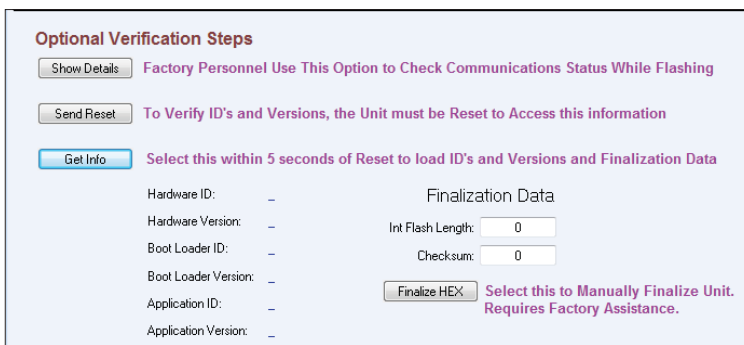
UPDATING THE SERVICE TOOL

Updating the Service Tool SD with Prism 2

9. The *Flash Main Controller Window* will appear.



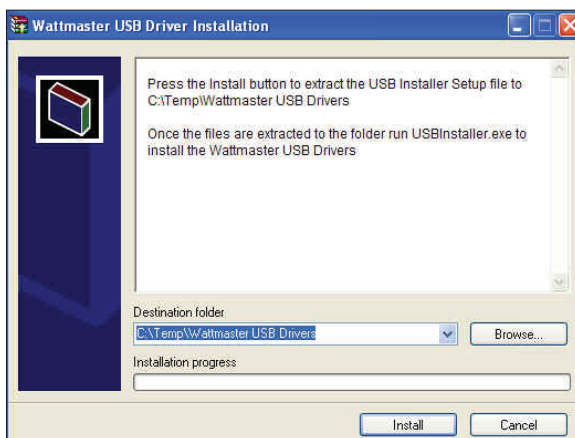
10. Step #1: In the Loop and Unit fields, enter 1 for the Loop and 62 for the Unit.
11. Step #2: In the HEX File field, type in the path and name of the HEX file you downloaded and/or copied to your hard drive or *click* the <Select File> button to search for the file.
12. Step #3: *Click* on the <Program HEX> button.
13. Apply power to the Service Tool SD and press the <ON> button.
14. Step #4: If successful, you should see the HEX File Progress bar showing the progress percentage.
15. Step #5: When the Progress Bar reaches 100%, the update should be complete.
16. You can verify the correct version of software in the Service Tool LCD display.
17. For optional verification steps, *click* the <Advanced> button on the Flash Controller toolbar. The following window will display:



NOTE: You should notify WattMaster Tech Support prior to using the *Optional Verification Steps Window*.

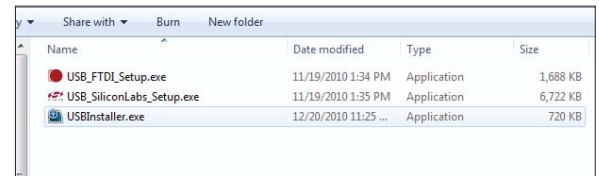
USB Serial Converter and Serial Port Driver Installation

1. *Insert* the USB Driver CD-ROM into your CD-ROM drive or *download* the USB Driver software file from www.techsupport.wattmaster.com. If using the CD-ROM, go to **Step 7**. If downloading the file, double-click on the link “USB Driver Setup.zip file for installing USB drivers for all WattMaster Products”.
2. *Click* <Open> when asked to save or open the file.
3. Extract and run (double-click) USB Driver Setup.exe.
4. Once you unzip the file, the *WattMaster USB Driver Installation Window* will appear. *Click* <Install>. This will unzip the driver installation files to C:\Temp\Wattmaster USB Drivers.



5. *Click* your <Start> button and then *click*, <Computer>.
6. *Double-click* Local Disk (C:). Then *double-click* the Temp folder.

7. *Double-click* the WattMaster USB Drivers folder and then *double-click* the USBInstaller.exe program. Then double-click on the file USB Driver Setup.exe.



8. The following window will pop up:



9. *Click* <Begin Install> and the installation program will walk you through the rest of the steps. The program might prompt you to remove old USB drivers from your computer. *Click* <Yes> if so. Once installation is complete, you will need to reboot your computer to have the new settings take effect.
10. With successful USB driver installation, you can now connect your USB device.

UPDATING THE SERVICE TOOL

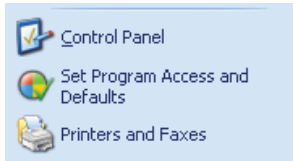
Updating the Modular Service Tool SD

Finding What COM Port Number the CommLink or USB-Link is Using

1. *Left-click* on <Start>, located on the bottom left of the Windows Tool Bar.



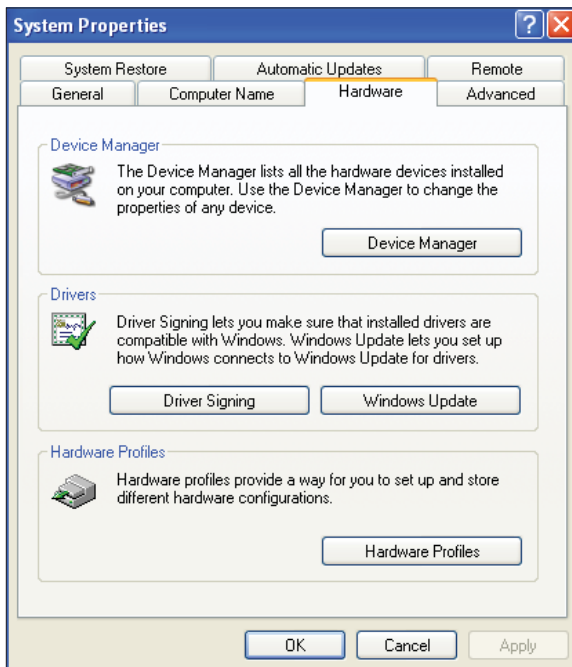
2. *Select* <Control Panel>.



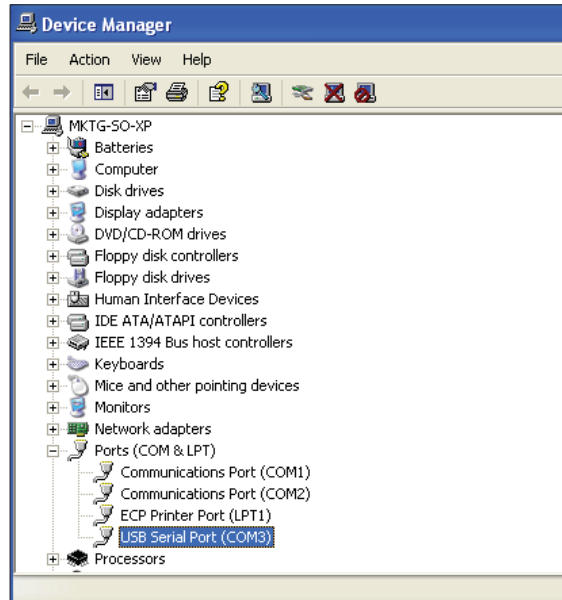
3. *Double-click* the System Icon.



4. *Click* the <Hardware> tab and then *click* the <Device Manager> button.



5. *Click* on the plus sign next to Ports to see all of the common ports.

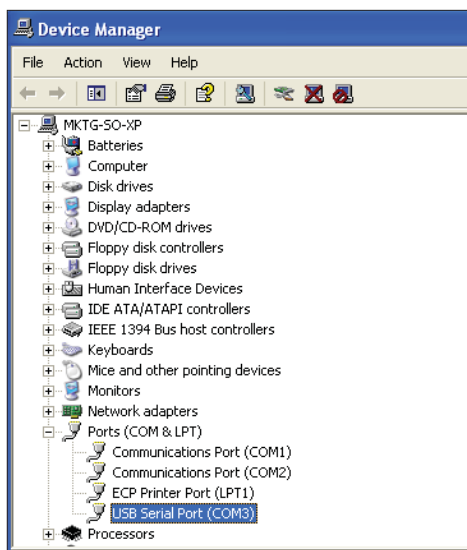


6. *Locate* the USB Serial Port (COM#). The COM# in parentheses is the port it is located on. *Write* this COM port number down. You will need to know this when setting up the Prism software.
7. If the COM port number is 10 or greater, go to "Changing the USB COM Port Number" on **page 5**.

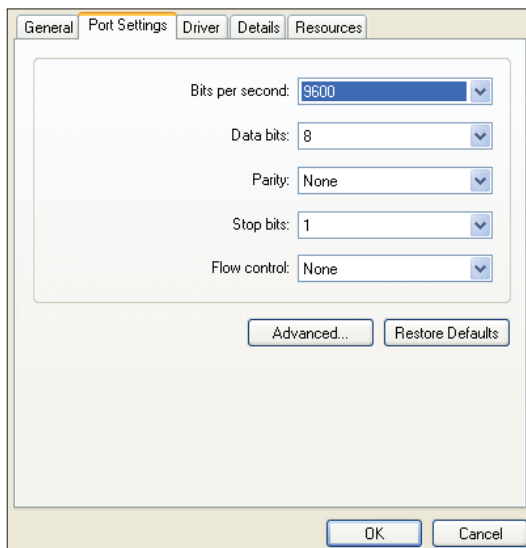
Changing the USB COM Port Number

When the CommLink or USB-Link is first plugged in, it will be assigned a COM port number to be used for communicating with the Prism software. If the port number is 10 or greater, it needs to be changed to a value less than 10 to be recognized by Prism.

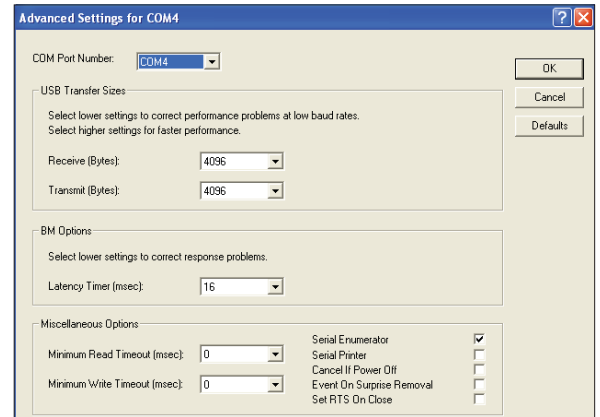
1. Click <Start>, click <Control Panel>, click <System>, click the <Hardware> tab, and then click <Device Manager> to get to the *Device Manager Window*.
2. Click on the plus sign next to Ports to see all of the COM ports.



3. Right-click on “USB Serial Port (COM#)” and select <Properties>. In the *Properties Window*, select the <Port Settings> tab.



4. To assign a port number less than 10, click on <Advanced>. The *Advanced Settings Window* will appear.



5. In the COM Port Number drop box, select which COM port you wish to use. Make sure you select a COM port number that is not currently in use (you can see the ports in use in the *Device Manager Window*). Select a port that is less than 10.

NOTE: Windows® will assign a port number to every device that has ever been installed on your computer. So if there are no available ports below 10, choose a port number less than 10 for a device listed that you know you are not currently using.

6. Once you select the correct COM port number, click <OK> and close any windows opened in the process of changing the port number. Make note of this number because you will need it for your Prism setup.

UPDATING THE SERVICE TOOL

Modular Service Tool SD With USB-Link 2 Connection

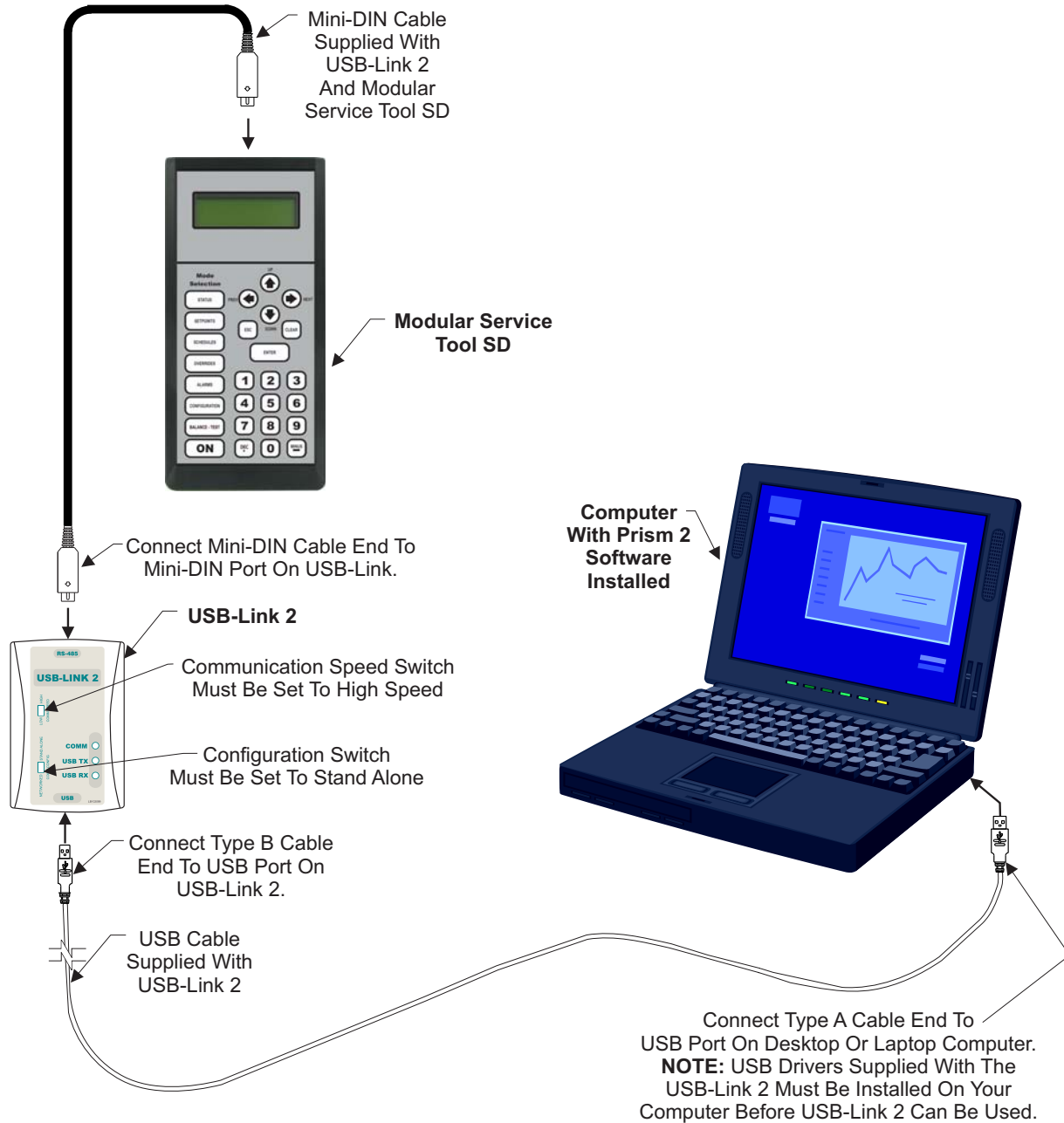


Figure 1: Modular Service Tool SD With USB-Link 2 Connection

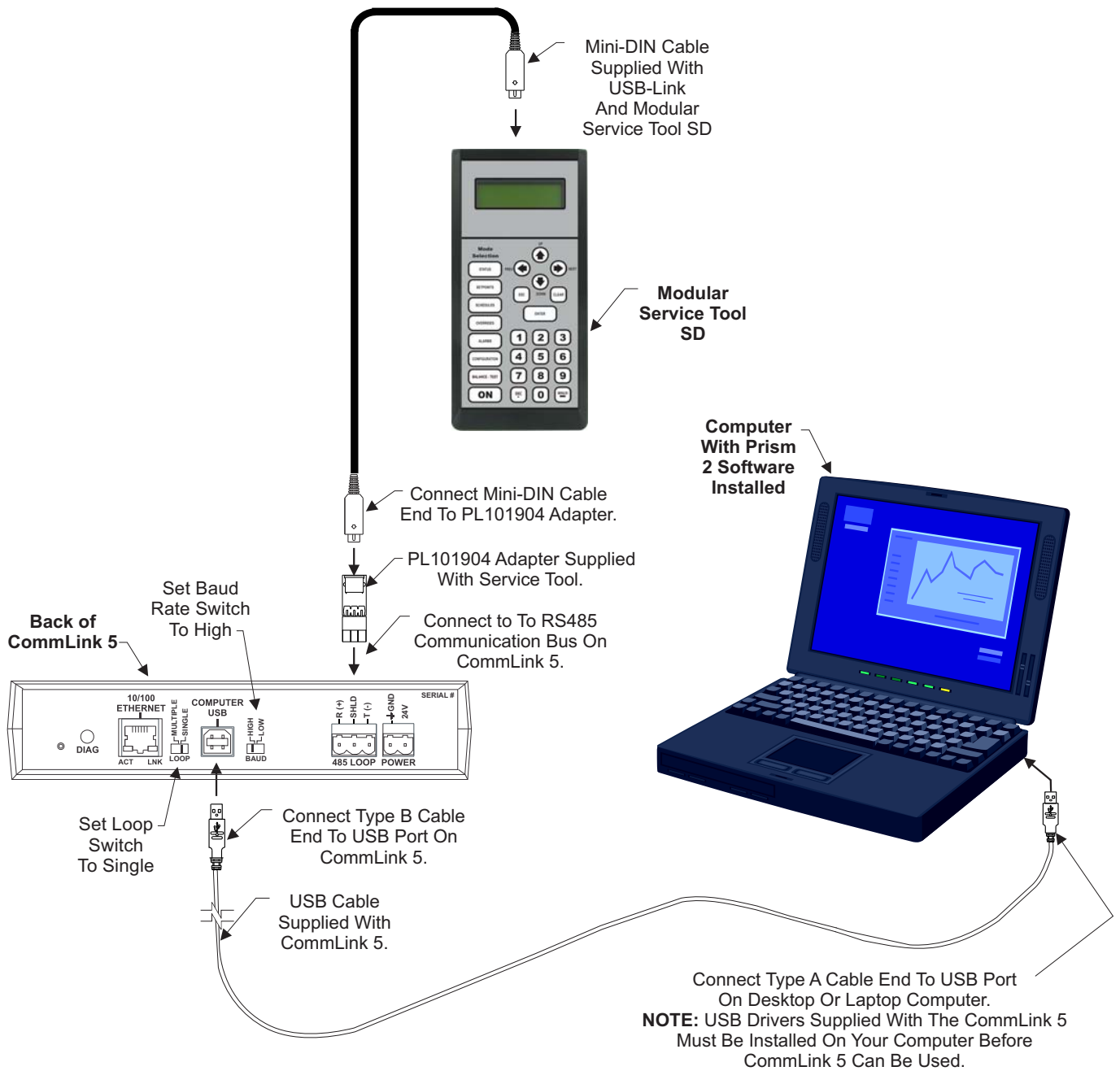


Figure 2: Modular Service Tool SD With CommLink 5 Connection



Form: OR-STSDBOOT-TGD-01C Printed in the USA
All rights reserved.
WattMaster Controls Inc. • 8500 NW River Park Drive • Parkville, MO • 64152
Phone: 866-918-1100 www.orioncontrols.com

April 2018
Copyright 2018
Fax (816) 505-1101